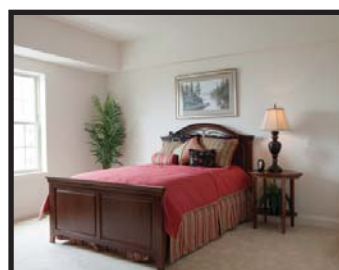
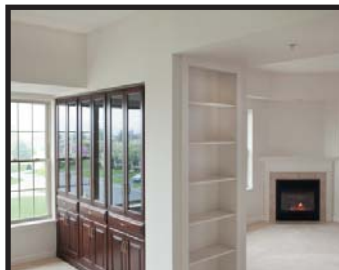




GARDEN SPOT VILLAGE - VILLAGE SQUARE APARTMENTS
NEW HOLLAND, PA



**OWNER: GARDEN SPOT VILLAGE
RETIREMENT COMMUNITY**

LOCATION: NEW HOLLAND, PA

**ARCHITECT: SFCS
CORNERSTONE DESIGN
ARCHITECTS**

FEATURES:

- 153,000 SF
- 6-story, 72-unit senior living apartments
- Various apartment configurations
- A first-of-its-kind in Lancaster County: 32 one-piece, clear-span, structural steel trusses allowed construction of a 54-vehicle underground garage without supporting transfer columns